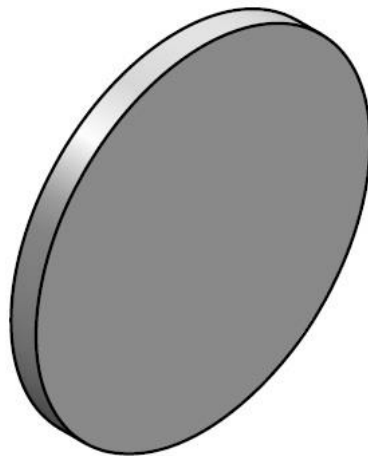
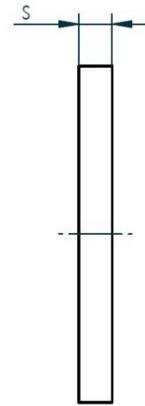
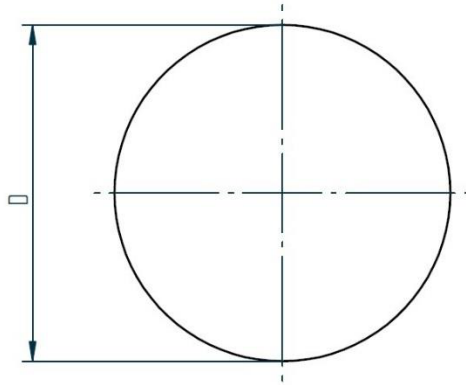


Edelstahl-Ronde (Dopplung)

Material 1.4571, roh, EN 10088-2



D	s	Artikel-Nr.	Kg / Stck
170 mm	4 mm	400-170-403	0,719

Auch in AlMg3 und Stahl lieferbar. Andere Abmessungen auf Anfrage

Datum
26.02.2015

Skizze
05/2603/12